



Transformer station type ST-T

rated power 500 kVA
for rated upper voltage 6,3kV



The transformer station type ST-T is a device designed for use on the ground with no explosion hazard. The transformer station ST-T is equipped with a power protections against short-circuits, overloads and lowered insulation resistance (for 500V AC) with installed three-core transformer: 500 (400+100) kVA and lower rated voltage of transformer 500V AC (for 400 kVA) i 400V AC (for 100 kVA).

TECHNICAL DATA:

ingress protection	IP54
station rated power	500(400 + 100)kVA
station upper voltage rated power	6,3kV
station lower rated voltage (Udn1)	525 V
station lower rated voltage (Udn2)	400(230) V
frequency	50 Hz
no of phases	3
rated current of station for 500 V	462 A
dimensions	2699(1735 without lighting mast)x1499x2922mm (height x width x length)
weight	3500 kg

CONSTRUCTION

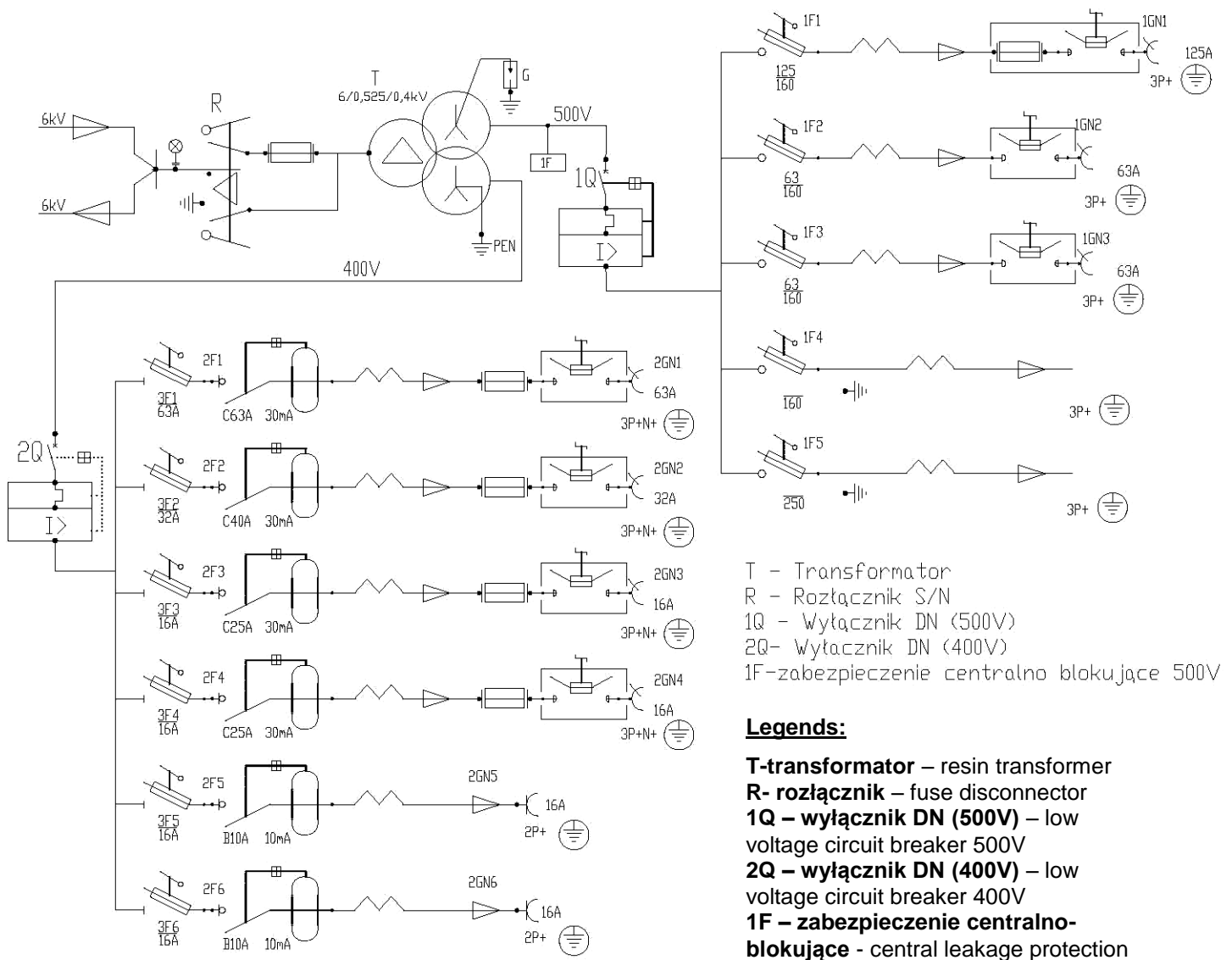
The ST station housing is made of steel sheets and steel profiles. It is of a modular design and comprises of the following parts:

- The chamber 6/10 kV (equipped with fuse disconnecter protecting the transformer)
- The transformer chamber (with resin transformer)
- The chamber 500 V (equipped with the main switch protecting the transformer, leakage protection, monitoring and control circuits)

DESCRIPTION OF OPERATION

The fuse disconnecter on the upper side allows for switching off the entire station, earthing and to obtain a visible discontinuity. Transformer station has five outlets of 500 V, four outlets of 400V and two outlets of 230 V designated to supply receivers. The outlets are equipped with power protections against short circuit and overload. Protection against an electric shock based on the central leakage protection for 500V, however for 400/230V protecting against electric shock is based on differential circuit breaker.

SCHEMATIC DIAGRAM



Orders should be made in writing or by fax to the address: